

# Anderson County 2014 County Commission Districts, Voting Precincts, and House Districts

- County Commission District
  - Voting Precinct
  - Lakes / Rivers
- HOUSE DISTRICT**
- 33
  - 36
- 1** County Commission District Number  
**1234** Precinct ID Number

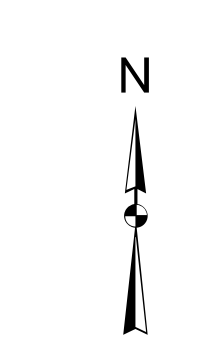
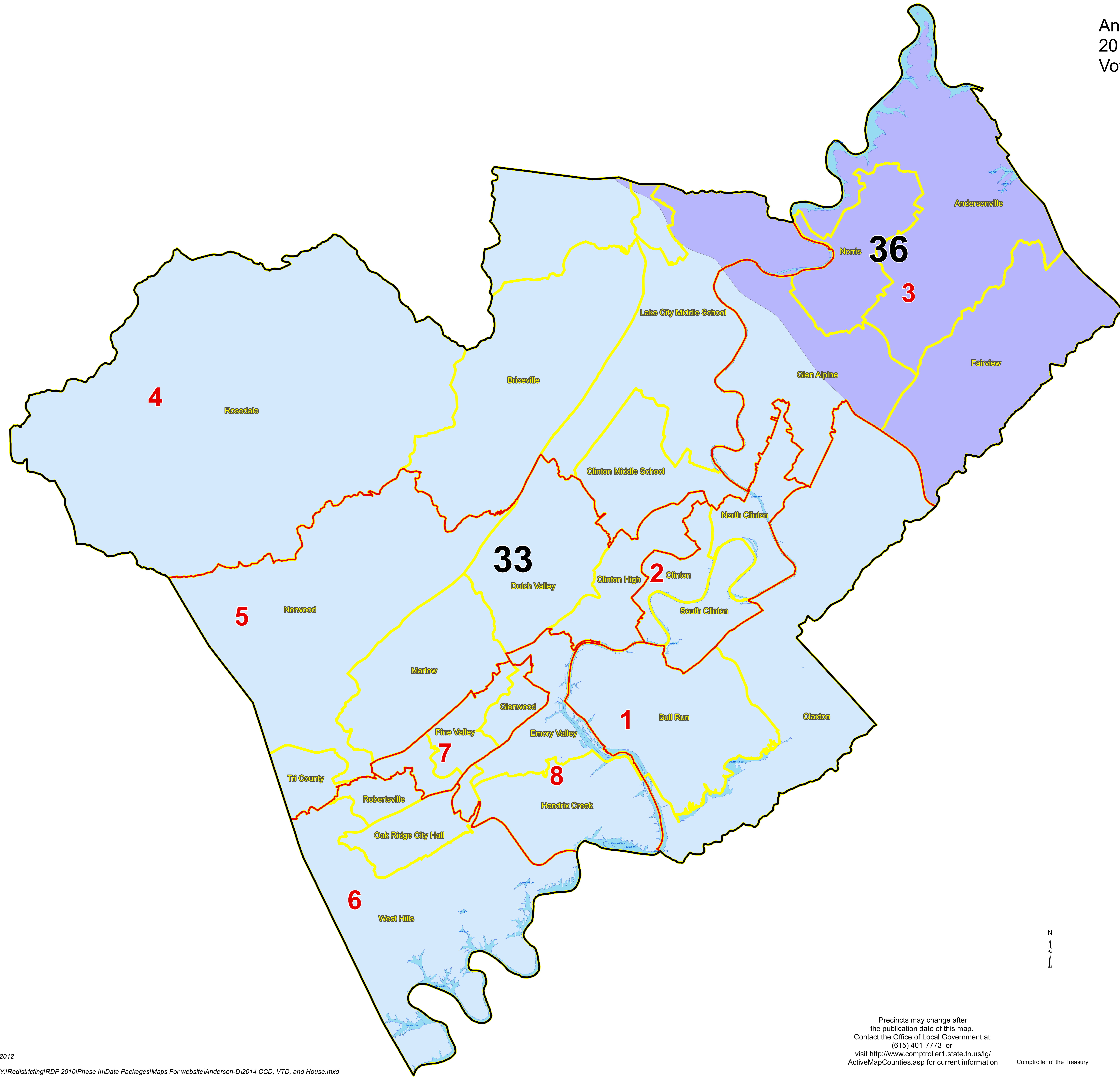
2010 Total Population 75,129

**2010 Population by District**  
Overall Range [4.7- (-5.2)] = 9.9  
Optimum Population is 9,391 per District

DISTRICT	NUMCOMS	TOTALPOP	DEVIATION	%DEVIATION	WVPOP	%WVPOP	BLPOP	%BLPOP	OTHERPOP	%OTHERPOP	HSPOP	%HSPOP
1	2	9630	439	4.7%	9470	96%	130	1%	230	2%	95	1%
2	2	9816	426	4.5%	9450	96%	129	1%	237	2%	162	2%
3	2	9837	446	4.7%	9593	98%	23	0%	121	1%	60	1%
4	2	9202	99	-1.1%	9056	97%	74	1%	160	2%	89	1%
5	2	9464	73	0.8%	8997	95%	228	2%	239	3%	88	1%
6	2	9044	-347	-3.7%	8957	77%	1319	15%	768	8%	453	6%
7	2	9064	-487	-5.2%	7952	86%	679	7%	672	6%	414	5%
8	2	8942	-469	-4.8%	7838	88%	385	4%	739	8%	347	4%

**2010 Population by Precinct**

NAME	TOTALPOP	TOTALPOP10	CCD
Andersonville	4398	3452	3
Briceville	1304	1005	4
Bull Run	4628	3730	1
Clinton	5002	3623	1
Clinton	3750	3655	2
Clinton High	2939	2290	5
Clinton Middle School	1791	1411	4
Dutch Valley	921	693	5
Emory Valley	2609	2642	8
Fairview	1735	1314	3
Glen Alpine	3366	2853	3
Glenwood	3426	2641	7
Henrick Creek	2997	2346	8
Highland View	2333	1725	7
Lake City	1749	1389	4
Lake City Middle School	4166	3297	4
Marlow	1817	1402	5
Norris	1491	1176	3
North Clinton	3882	3072	2
Norwood	2617	1887	6
Oak Ridge City Hall	2812	2126	6
Pine Valley	3245	2694	7
Robertsville	3638	2875	6
Rosedale	262	216	4
South Clinton	2184	1877	2
Tri County	1170	927	5
West Hills	2594	2017	8
Woodland	2398	2019	8



**STATE OF TENNESSEE  
COMPTROLLER OF THE TREASURY  
OFFICE OF LOCAL GOVERNMENT**  
James K. Polk State Office Building  
505 Deaderick Street, Suite 1700  
Nashville, Tennessee 37243-1402  
Phone: (615) 401-7773  
Fax: (615) 532-5279

Precincts may change after the publication date of this map. Contact the Office of Local Government at (615) 401-7773 or visit <http://www.comptroller1.state.tn.us/lg/ActiveMapCounties.asp> for current information

Comptroller of the Treasury